

ScrapX™ Application Note

Importing Classic Scrapbooks

Summary: Classic scrapbooks including those made with the classic version of ScrapIt and ScrapIt Pro (products of John V. Holder, Software) can be imported and saved as ScrapX scrapbooks. All the content you have compiled in classic scrapbooks can be used in Mac OS X. *And, you get the advantages of ScrapX!*

Basic Procedure

1. Open the Classic or ScrapIt scrapbook. With ScrapX 1.3.2 you have several options for how to do this:

- Select **File > Open....** In the dialog that appears navigate to the scrapbook you want to import. then click on Open.
- Select **File > Import Classic Scrapbook....** In the dialog that appears navigate to the classic scrapbook you want to import. Then click on Open.
- Drag the scrapbook onto the ScrapX icon in the Dock or in a Finder window.
- Double-click the scrapbook icon after going to the Get Info panel and selecting ScrapX as the preferred application to open that scrapbook or all scrapbooks of that file type.

Note: If you have several scrapbooks you want to import, the last two methods will allow importing more than one at a time.

2. If "All Available Types" is selected in the "Types Loaded for New Items" User Preferences, a new scrapbook will open and the import will begin. The Item number will increment as items are imported. If "Only Supported Types" is selected for "Types Loaded for New Items," a warning message will appear:



If you want to import all information in the classic scrapbook click on **Cancel**, change your User Preference, and then begin again with step 1 of the Import procedure. If you want to proceed using your existing User Preference click on **Import**.

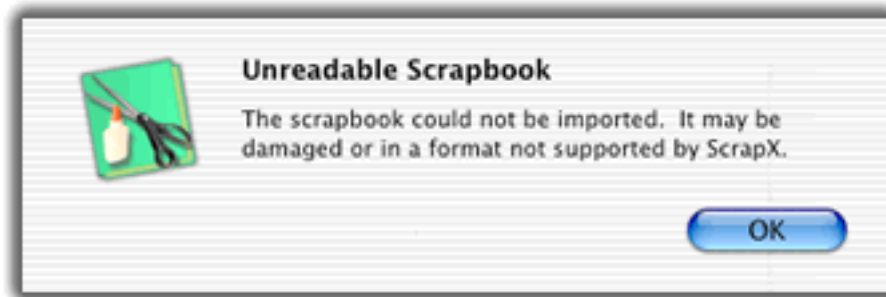
3. When the import process has completed normally, the following panel will appear.



The first number is the number of items imported to the ScrapX scrapbook, and the second is the number of items in the original classic scrapbook. Click **OK**.

Note: With the unregistered (trial) form of ScrapX, only the first ten (10) items will be imported if the classic scrapbook has more than 10 items.

If, for whatever reason, a scrapbook cannot be imported a message will appear:



4. Use the **File > Save** or **File Save As...** command to save the imported scrapbook in the ScrapX format. The default file name will be taken from the imported scrapbook.

Effect of User Preferences

When a classic scrapbook is imported the result may be affected by the setting for the "Types Loaded for New Items" preference (under the "New Items" tab in User Preferences). Three settings are possible for this preference:

- All Available Types (the default selection)
- Only Supported Types
 - Load Only Primary Type (available if "Only Supported Types" is selected)
- If "All Available Types" is selected, all of the type information for each item will be imported even if ScrapX cannot display any of the types. The imported scrapbook will have the same number of items as the classic scrapbook.

Note: This is the default selection. It is recommended that all information be imported unless the user has a specific reason for limiting type information.

- If "Only Supported Types" is selected, ScrapX will not import types that it does not support. If an item in the classic scrapbook does not have at least one type supported by ScrapX then that item won't be imported at all, and the ScrapX scrapbook will have fewer items than the original classic scrapbook. (An item that has only the 3DMF (QuickDraw 3D) type will not be imported because this type, although supported in the classic scrapbook, is not supported in Mac OS X or in ScrapX. Also, items that in the classic scrapbook have only unsupported types will not be imported.)
- If "Load Only Primary Type" is selected in addition to "Only Supported Types," then only one supported type will be imported per item. As a result, some items in the imported scrapbook may include even less information. However, this selection will not further reduce the number of items in the imported scrapbook.

Note: When an item in the ScrapX scrapbook does not include all of the type information present in the classic scrapbook, a "Mod" date is appended to the Date field.

Frequently Asked Questions (FAQs)

Q: Can two or more classic scrapbooks be combined in a single ScrapX scrapbook?
A. *Yes and no. Classic scrapbooks were limited to 255 items; there is no limit on the number of items in a ScrapX scrapbook. However, at the current time the only way to combine ScrapX scrapbooks is to drag each item from one scrapbook to another scrapbook.*

Q: Why do User Preferences allow importing only a portion of the information in a classic scrapbook.
A. *The User Preference for "Types Loaded in New Items" applies to all new items, not just those created by importing a classic scrapbook. ScrapX allows control over the amount of information stored in new items so that users can make intelligent tradeoffs between the memory size of a scrapbook and the purposes for which the scrapbook will be used. (Note: if you import all of the information from a classic scrapbook you later can discard unnecessary types by using the stripping commands in ScrapX.)*

Q: Which scrapbooks created by ScrapIt can be imported by ScrapX?
A. *Only those made with classic versions of this application. Scrapbooks made with ScrapIt Pro 5.5.2 and at least some earlier versions can be imported.*

Exceptional Behaviors: None known.